

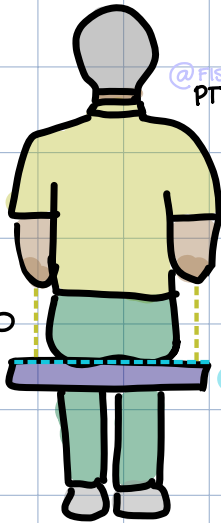
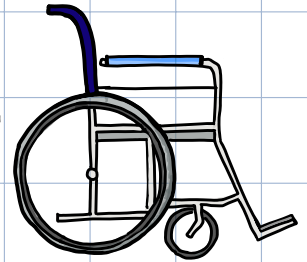
WHEELCHAIR REVIEW

IMPORTANCE OF WHEELCHAIR FITTING

SKIN INTEGRITY
 CONTRACTURE PREVENTION
 MUSCLE BALANCE / PROPER POSTURE
 FUNCTIONAL TASK

STANDARD ADULT WHEELCHAIR

16" x 18" x 20"
 (D) (W) (H)



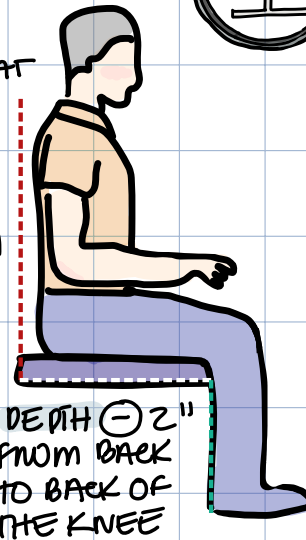
@PHYSIOAIE
 PTHUSIE
 2022

WHEELCHAIR
 PROPER FITTING

ARM REST
 (+) 1 FROM
 BOTTOM OF
 THE CHAIR TO
 A FLEXED
 ELBOW

WITH (+) 2" ON
 THE WIDEST POINT,
 ACROSS HIPS,
 THIGHS

LENGTH FROM SEAT
 TO SURFACE
 THE HEIGHT WILL
 DEPEND ON THE
 PERSON TRUNK'S
 LENGTH / CONTROL
 (+) LEVEL OF
 ACTIVITY
 (NON SPECIFIC)



DEPTH (-) 2"
 FROM BACK
 TO BACK OF
 THE KNEE

FOOT REST
 2" FLOOR
 CLEARANCE
 (IF PATIENT
 USES ORTHOTICS
 MEASURE
 INCLUDING IT)

TYPES OF MANUAL WHEELCHAIRS

DOOR SIZE
 WHEN OPENED
 90° ANGLE 32"

HALLWAYS SIZE
 32" FOR ONE CHAIR
 60" FOR TWO CHAIRS

TURNING SPACE
 60" x 60" / 5 FT x 5 FT

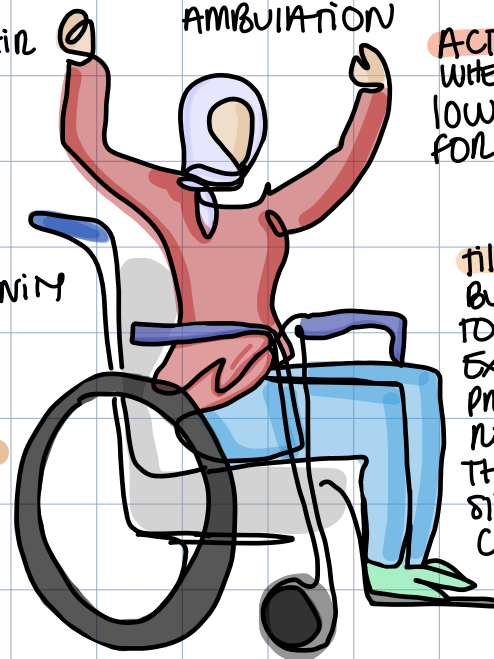
HOME BOUND
 WHEELCHAIR
 RIGID FRAME
 STANDARD FRAME
 HOSPITAL
 WHEELCHAIR

ACTIVE
 COMMUNITY
 FIXED FRAME
 LIGHT WEIGHT
 ACTIVE DUM
 MORE INTENSE
 COMMUNITY
 AMBULATION

ACTIVE SPORT
 WHEELCHAIR
 LOW SEAT USE
 FOR SPORTS

COMMUNITY
 WHEELCHAIR
 FOLDABLE
 LIGHT WEIGHT
 USE FOR COMMUNITY
 AMBULATION

RECLINING
 WHEELCHAIR
 DOOR UPRIGHT
 TRUNK SUPPORT
 CARETAKER
 REGULAR
 CHANGES



TILT IN PLACE
 BULKIER DIFFICULT
 TO ACCOMODATE
 EXTENSOR TONE
 PRESSURE
 RELIEF FOR
 THOSE THAT CAN
 SLIDE OUT THE
 CHAIR

